

**Three-phase pole-changing motors designed
for range of rated voltage
380-420 V ± 5% - 50 Hz**

**For mains voltage
to IEC 60038
400 V ± 10% - 50 Hz**

Temperature rise to class B

Type	kW	HP	min ⁻¹	M _N Nm	η 100%	cos φ	I _N 400V	I _N 380-420V	I _A /I _N	M _A /M _N	J 10 ⁻³ kgm ²	kg	
1500/3000 min⁻¹ (4/2 poles) - Dahlander connection Δ/YY													
AM 63Z AA	4/2	0.20/0.30	0.27/0.40	1345/2700	1.4/1.1	56/65	0.65/0.81	0.8/0.83	0.89/0.88	2.4/3.2	2.1/2.1	0.40	4.6
AM 71Z AA	4/2	0.30/0.45	0.40/0.65	1374/2830	2.1/1.5	61/66	0.78/0.73	1.0/1.35	1.2/1.5	3.3/3.0	2.3/2.1	0.76	6.3
AM 80Z AA	4/2	0.45/0.60	0.65/0.80	1390/2760	3.1/2.1	64/68.8	0.75/0.80	1.4/1.6	1.5/1.7	3.8/4.0	2.3/2.2	1.58	8.3
AM 80Z BA	4/2	0.55/0.75	0.75/1.0	1435/2850	3.7/2.5	70/71.2	0.67/0.77	1.7/2.0	1.8/2.1	4.5/5.0	2.6/2.8	2.00	11.5
AM 80Z CA	4/2	0.8/1.1	1.1/1.5	1425/2830	5.4/3.7	76.1/77.2	0.70/0.79	2.2/2.6	2.5/2.8	4.5/4.9	2.5/2.7	2.41	14.7
AM 90L AA	4/2	1.2/1.55	1.6/2.1	1435/2850	8/5.2	77.4/78.3	0.71/0.79	3.2/3.7	3.4/3.9	4.7/5.1	2.6/2.7	3.10	15.6
AM 90L BA	4/2	1.6/2.0 ¹⁾	2.15/2.7 ¹⁾	1390/2810	11/6.8	73.5/75.5	0.78/0.86	4.0/4.6	4.1/4.7	4.1/5.5	2.7/2.6	3.73	17.1
AM 100L AA	4/2	1.8/2.5	2.5/3.35	1420/2865	12.1/8.3	78.5/77.4	0.76/0.84	4.5/5.6	4.7/5.8	5.2/5.5	2.2/2.2	4.60	21.4
AM 100L BA	4/2	2.2/3.0	3.0/4.0	1410/2830	14.9/10.1	74.6/71.4	0.72/0.82	5.9/7.4	6.1/7.7	4.2/4.3	1.8/2.0	4.60	22.5
AM 100L CA	4/2	2.6/3.3	3.5/4.4	1430/2890	17.4/10.9	82.6/78.6	0.78/0.76	5.9/8.0	6.1/8.5	4.7/5.5	1.9/2.2	5.58	23.2
AM 112M AA	4/2	3.3/4.4	4.4/5.9	1410/2800	22.4/15	77.4/75.4	0.82/0.85	7.5/9.9	7.8/10.6	4.5/5.1	2.1/2.4	13.30	36.1
AM 132S ZA	4/2	4.4/5.5	6.0/7.5	1450/2925	29/18	83.0/84.6	0.70/0.87	11.0/10.8	12.0/11.8	4.4/7.2	2.2/2.7	13.83	42.6
AM 132M ZA	4/2	6.6/8.1	9.0/11.0	1460/2920	43.2/26.5	85.4/84.5	0.76/0.90	14.7/15.4	15.5/16.4	5.5/7.5	2.6/2.9	17.13	51.4
AM 160M ZA	4/2	8.8/11.0	12.0/15.0	1460/2940	57.6/35.7	87.1/87.5	0.79/0.91	18.5/20.0	19.0/21.0	5.5/7.5	2.0/1.9	51.75	94.0
AM 160L ZA	4/2	12.5/15.0	17.0/20.4	1470/2955	81.2/48.5	89.4/90.0	0.74/0.90	27.4/26.8	29.0/28.2	4.8/7.4	2.1/2.3	64.00	108.7
AM 180M ZG	4/2	15/19.5	20/26.5	1465/2955	97.8/63	89/87	0.80/0.88	30/36.5	31.5/38.5	5.8/7.2	2.0/1.8	112	130.0
AM 180L ZG	4/2	17.5/23	24/31	1465/2950	114.1/74.5	90/88	0.81/0.86	34.5/43	36.5/46	6.5/7.5	2.0/1.8	132	140.0
AM 200L PG	4/2	24/29	32.5/39	1470/2955	155.9/93.7	91/89.5	0.83/0.89	46/52	48/55	6.2/7.8	2.1/2.5	206	230.0
AM 200L RG	4/2	26/33	35/45	1470/2955	168.9/106.6	91.5/89.5	0.84/0.91	50/59	52/62	6.4/7.9	2.0/2.2	248	255.0
AM 225S P	4/2	30/38	40/52	1470/2965	194.9/122.4	92/91	0.85/0.91	55/66	58/70	5.8/7.8	1.7/1.8	356	325.0
AM 225M P	4/2	34/46 ¹⁾	46/63 ¹⁾	1475/2960	220.1/148.4	92/91	0.85/0.90	63/81	66/85	6.6/7.8	1.9/1.8	428	330.0
AM 250M P	4/2	50/58	68/79	1470/2965	324.8/186.8	93/92.5	0.85/0.90	92/100	96/104	5.8/8.6	3.0/3.5	750	465.0
AM 280S G	4/2	60/72 ¹⁾	82/98 ¹⁾	1480/2975	387.1/231.1	94/93	0.85/0.91	108/122	114/129	5.9/8.5	2.0/2.2	1200	580.0
AM 280M G	4/2	70/84 ¹⁾	95/114 ¹⁾	1480/2975	451.7/269.6	94/93	0.85/0.91	126/142	133/150	5.9/8.5	2.0/2.2	1400	620.0
AM 315S G	4/2	85/115	116/156	1485/2970	546.6/369.8	94.5/93	0.86/0.91	150/195	156/203	6.0/7.4	1.6/1.5	2200	860.0
AM 315M G	4/2	100/125	136/170	1485/2970	643.1/401.9	95/94	0.87/0.91	175/210	182/217	6.6/7.9	1.7/1.6	3100	940.0
AM 315L G	4/2	120/150	163/204	1485/2970	771.7/482.3	95/94	0.87/0.91	210/255	219/264	6.6/7.9	1.7/1.6	3100	1120.0

1) Temperature rise to class F

**Three-phase pole-changing motors designed
for range of rated voltage
380-420 V ± 5% - 50 Hz**

**For mains voltage
to IEC 60038
400 V ± 10% - 50 Hz**



Temperature rise to class B

Type	kW	HP	min ⁻¹	M _N Nm	η 100%	cos φ	I _N		I _Δ /I _N	M _Δ /M _N	J 10 ³ kgm ²	kg	
							400V	380-420V					
750/1500 min⁻¹ (8/4 poles) - Dahlander connection Δ/YY													
AM 71Z AA	8/4	0.09/0.15	0.12/0.20	610/1310	1.4/1.1	40/56	0.61/0.75	0.53/0.52	0.59/0.57	2.5/3.2	1.6/1.6	0.71	6.3
AM 80Z AA	8/4	0.18/0.37	0.25/0.50	700/1370	2.5/2.6	43.2/58.7	0.63/0.83	1.0/1.1	1.1/1.2	2.6/3.4	1.8/1.6	1.97	7.9
AM 80Z BA	8/4	0.26/0.51	0.35/0.68	700/1360	3.5/3.6	44.1/61.2	0.60/0.88	1.2/1.4	1.3/1.5	2.5/3.6	2.0/1.6	2.47	9.2
AM 90S AA	8/4	0.37/0.75	0.50/1.0	690/1385	5.1/5.2	52.2/67.1	0.58/0.82	1.8/2.0	1.9/2.1	2.8/3.9	1.9/1.8	3.18	13.5
AM 90L BA	8/4	0.5/1.0	0.67/1.34	690/1410	6.9/6.8	52.2/72.5	0.58/0.80	2.4/2.4	2.5/2.5	3.3/4.0	2.3/1.9	4.78	15.7
AM 100L AA	8/4	0.7/1.4	0.94/1.9	700/1440	9.5/9.3	57.2/78.5	0.50/0.78	3.5/3.3	3.7/3.4	2.8/4.3	2.1/1.9	5.58	21.9
AM 100L BA	8/4	0.9/1.8 ¹⁾	1.2/2.5 ¹⁾	690/1415	12.5/12.1	62/76	0.56/0.87	3.8/4.0	4.0/4.3	2.5/4.5	1.9/1.8	6.00	23.7
AM 112M AA	8/4	1/1.8	1.34/2.5	710/1445	13.5/11.9	66.1/78.5	0.61/0.82	4.1/4.1	4.4/4.2	3.9/6.3	2.2/2.1	14.18	31.7
AM 112M BA	8/4	1.3/2.6 ¹⁾	1.75/3.0 ¹⁾	705/1420	17.6/17.5	70.0/76.3	0.65/0.88	4.6/5.7	4.8/5.9	3.2/4.8	2.1/2.0	16.70	34.2
AM 132S ZA	8/4	2.1/3.7	2.9/5.0	710/1440	28.2/24.5	70.2/76.1	0.66/0.84	6.5/8.4	6.7/8.6	4.0/5.2	1.9/1.7	29.50	42.5
AM 132M ZA	8/4	2.6/4.8	3.5/6.5	715/1450	34.7/31.6	71.6/78.8	0.60/0.80	8.8/11.0	9.8/12.0	4.3/5.5	2.3/1.8	37.75	55.5
AM 160M YA	8/4	4.0/6.3	5.5/8.6	710/1410	53.8/42.7	80.0/81.0	0.64/0.88	11.3/12.8	12.3/13.5	4.6/6.5	1.8/1.7	81.25	88.5
AM 160L YA	8/4	4.8/7.5	6.5/10.0	730/1470	62.8/48.7	80.0/85.0	0.65/0.85	13.2/15.0	14.0/16.0	4.5/6.5	1.8/1.6	105.75	106.5
AM 160L ZA	8/4	5.9/10.3	8.0/14.0	725/1450	77.7/67.8	81.0/87.0	0.66/0.88	16.1/19.5	17.0/20.4	5.0/6.0	1.9/1.6	127.50	110.5
AM 180L ZG	8/4	11/18	15/24	730/1465	143.9/117.3	87/89	0.72/0.90	26/32	27/34	5.8/6.8	2.0/1.6	215.0	150.0
AM 200L PG	8/4	15/23	20/31	730/1465	196.2/149.9	88/88	0.77/0.92	33.5/41	34/43	5.3/7.0	2.0/2.3	285.0	220.0
AM 200L RG	8/4	18/29	24/39	735/1470	233.9/188.4	89/89	0.73/0.91	40/51	42/54	5.6/7.5	2.6/2.4	375.0	255
AM 225S PG	8/4	21/32	28/43	735/1475	272.8/207.2	89/90	0.79/0.92	44/55	45/59	5.8/7.4	2.2/2.0	576.0	310.0
AM 225M PG	8/4	26/37 ¹⁾	35/50 ¹⁾	735/1475	337.8/239.5	90/90	0.78/0.91	53/65	56/68	5.4/7.2	2.1/2.1	577.0	315.0
AM 250M PG	8/4	32/46 ¹⁾	43/63 ¹⁾	730/1470	418.6/298.8	90/90.5	0.77/0.91	67/81	70/85	6.0/8.8	2.8/2.8	1320.0	490.0
AM 280S G	8/4	44/60 ¹⁾	60/82 ¹⁾	740/1485	567.8/385.8	91/91	0.80/0.91	88/105	93/110	5.8/8.2	2.1/2.3	2000.0	580.0
AM 280M G	8/4	52/70 ¹⁾	71/95 ¹⁾	740/1485	671.1/450.1	91/91	0.80/0.91	105/122	110/128	5.8/8.2	2.1/2.3	2320.0	620.0
AM 315S ZG	8/4	60/100	82/136	735/1480	779.6/645.2	93/93	0.75/0.88	117/170	123/180	6.6/7.5	2.2/2.2	3100.1	790.0
AM 315M ZG	8/4	75/120	100/163	735/1480	974.4/774.3	93/93	0.76/0.89	152/205	160/215	6.6/7.7	2.3/2.3	3600.0	860.0
AM 315L ZG	8/4	90/150	120/200	735/1480	1169.3/967.9	94/94	0.76/0.89	180/253	190/266	6.9/7.9	2.3/2.5	4300.0	990.0

1) Temperature rise to class F

**Three-phase pole-changing motors designed
for range of rated voltage
380-420 V ± 5% - 50 Hz**

**For mains voltage
to IEC 60038
400 V ± 10% - 50 Hz**

Temperature rise to class B

Type	kW	HP	min ⁻¹	M _N Nm	η 100%	cos φ	I _N		I _A /I _N	M _A /M _N	J 10 ³ kgm ²	kg	
							400V	380-420V					
1500/1000 min⁻¹ (4/6 poles) - separate windings													
AM 71Z AA	4/6	0.22/0.15	0.30/0.20	1430/900	1.5/1.6	61/44	0.7/0.64	0.78/0.68	0.83/0.73	1.9/3.4	1.5/1.8	0.73	6.2
AM 80Z AA	4/6	0.37/0.26	0.50/0.35	1385/905	2.6/2.7	61.4/48.1	0.82/0.80	1.1/1.0	1.1/1.1	3.7/2.6	1.7/1.3	1.97	8.3
AM 80Z BA	4/6	0.55/0.37	0.75/0.50	1380/900	3.8/3.9	60.5/51.1	0.64/0.82	1.5/1.3	1.6/1.4	3.7/2.7	1.6/1.2	2.47	10.0
AM 90S AA	4/6	0.75/0.5	1.0/0.67	1400/930	5.1/5.1	63/64	0.81/0.61	2.2/1.9	2.3/2.1	3.0/3.5	1.4/1.8	4.10	13.4
AM 90L BA	4/6	1.0/0.65	1.34/0.87	1380/920	6.9/6.7	68.8/67.1	0.81/0.62	2.6/2.3	2.8/2.5	2.9/3.4	1.1/1.6	4.78	16.4
AM 100L AA	4/6	1.2/0.8	1.6/1.07	1460/940	7.8/8.1	76.0/67.9	0.66/0.70	3.5/2.5	3.8/2.6	4.7/3.0	2.1/1.5	4.60	24.4
AM 100L BA	4/6	1.6/1.0	2.15/1.34	1445/935	10.6/10.2	77.6/69.5	0.73/0.63	4.1/3.3	4.3/3.5	5.8/3.0	2.8/1.7	5.58	33.2
AM 112M AA	4/6	1.8/1.3	2.5/1.75	1445/950	11.9/13.1	74.6/69.5	0.85/0.78	4.2/3.6	4.4/3.7	5.9/3.8	1.9/1.3	14.18	33.3
AM 112M BA	4/6	2.6/1.85	3.5/2.5	1445/950	17.2/18.6	73.8/71.6	0.86/0.73	6.0/5.2	6.2/5.4	6.1/4.4	2.0/1.7	17.53	37.0
AM 132S ZA	4/6	3.1/2.2	4.2/3.0	1440/965	20.6/21.8	80/78	0.80/0.74	7/5.5	7.5/6	5.8/5.6	2.1/2.0	22.4	41.9
AM 132M ZA	4/6	4.0/2.6	5.5/3.5	1470/975	26/25.5	81.0/79.3	0.83/0.74	8.6/6.4	9.3/7.0	7.7/5.2	2.0/1.9	29.25	51.0
AM 160M YA	4/6	5.5/3.7	7.5/5.0	1480/970	35.5/36.4	84.0/81.4	0.79/0.73	12.0/9.0	12.9/9.6	7.5/4.5	2.5/1.6	81.25	88.5
AM 160M ZA	4/6	7.5/4.8	10.2/6.5	1465/960	48.9/47.7	85.0/82.6	0.83/0.75	15.4/11.2	15.8/11.5	7.4/4.6	2.4/1.6	81.25	88.5
AM 160L ZA	4/6	11.0/6.6	15.0/9.0	1470/960	71.5/65.7	86.0/83.8	0.86/0.75	21.6/15.2	22.5/16.0	7.2/5.0	2.3/1.8	105.75	106.5
AM 180L ZG	4/6	16.5/11	22.5/15	1475/985	106.8/106.6	89/86	0.87/0.76	31/24	32.5/25.5	7.6/7.8	2.0/2.4	215.0	150.0
AM 200L PG	4/6	21/14	28/19	1470/980	136.4/136.4	88/87	0.88/0.81	39/28.5	41/30	6.0/6.4	1.8/2.2	285.0	220.0
AM 200L RG	4/6	26/18	35/24	1475/985	168.3/174.5	89.5/88.5	0.88/0.81	48/36	50/38	7.2/7.4	2.0/2.5	375.0	255.0
AM 225S PG	4/6	30/21	40/28	1475/985	194.2/203.6	91/89	0.89/0.81	53/42	56/44	6.8/7.4	1.9/2.6	583.0	310.0
AM 225M PG	4/6	37/25 ¹⁾	50/34 ¹⁾	1475/985	239.5/242.4	90.5/89	0.90/0.83	66/49	69/51	6.2/6.8	1.8/2.2	583.0	315.0
AM 250M PG	4/6	45/30	60/40	1475/980	291.3/292.3	91/90.5	0.90/0.86	79/56	83/59	8.5/7.6	2.8/3.0	1320.0	490.0
AM 280S G	4/6	65/45 ¹⁾	88/60 ¹⁾	1485/988	418/435	91.5/92	0.88/0.83	117/86	123/90	7.0/6.8	1.7/2.3	1200.0	580.0
AM 280M G	4/6	80/54 ¹⁾	109/73 ¹⁾	1485/988	514.5/521.9	91.5/91	0.88/0.83	144/105	151/110	7.0/6.8	1.7/2.3	1400.0	620.0
AM 315S G	4/6	87/58	117/78	1480/985	561.4/562.3	93/93	0.90/0.85	150/105	157/110	7.8/7.8	1.9/2.2	3100.0	790.0
AM 315M G	4/6	95/65	129/88	1480/985	613/630.2	93/93	0.90/0.85	165/118	171/124	7.8/7.8	2.0/2.2	3600.0	860.0
AM 315L G	4/6	105/72	141/96	1480/985	677.5/698	94/94	0.93/0.87	175/127	183/135	7.8/8.0	2.0/2.3	4300.0	990.0

1) Temperature rise to class F

**Three-phase pole-changing motors designed
for range of rated voltage
380-420 V ± 5% - 50 Hz**

**For mains voltage
to IEC 60038
400 V ± 10% - 50 Hz**



Temperature rise to class B

Type	kW	HP	min ⁻¹	M _N Nm	η 100%	cos φ	I _N		I _A /I _N	M _A /M _N	J		
							400V	380-420V			10 ³ kgm ²	kg	
1000/750 min⁻¹ (6/8 poles) - separate windings													
AM 80Z AA	6/8	0.37/0.18	0.50/0.25	915/700	3.9/2.5	51.1/44.2	0.81/0.65	1.3/1.0	1.4/1.0	2.8/2.5	1.4/1.7	2.47	9.5
AM 90L AA	6/8	0.55/0.30	0.75/0.40	950/710	5.5/4	65.2/45.1	0.62/0.52	2.0/1.8	2.1/1.9	3.9/2.6	2.5/1.9	4.78	16.2
AM 100L AA	6/8	0.75/0.45	1.0/0.60	960/720	7.5/6	72.6/61.8	0.67/0.54	2.2/2.0	2.3/2.1	4.1/2.9	1.9/1.9	6.73	23.4
AM 112M AA	6/8	0.95/0.65	1.3/0.90	965/715	9.4/8.7	65.2/62.1	0.78/0.70	3.0/2.2	3.2/2.3	4.5/3.8	1.4/1.7	14.18	32.0
AM 112M BA	6/8	1.5/0.75	2.0/1.0	970/720	14.8/9.9	75.3/64.6	0.66/0.60	4.4/2.8	4.6/3.0	4.6/3.8	2.2/2.1	18.70	36.2
AM 132S ZA	6/8	2.2/1.2	3.0/1.6	970/730	21.7/15.7	73.5/66.0	0.69/0.60	6.3/4.4	6.6/4.8	4.5/3.7	1.6/1.7	29.5	42.5
AM 132M ZA	6/8	3.0/1.7	4.1/2.3	980/730	29.2/22.2	78.2/72.5	0.72/0.64	7.7/5.3	8.2/5.9	5.4/4.3	1.7/1.7	37.75	55.5
AM 160M YA	6/8	4.8/2.6	6.5/3.5	970/730	47.3/34	83.0/74.0	0.80/0.70	10.5/7.3	11.0/7.7	4.8/3.6	1.9/1.8	112.7	88.0
AM 160M ZA	6/8	5.9/3.3	8.0/4.5	970/730	58.1/43.2	83.2/73.0	0.76/0.60	13.5/10.9	14.5/11.4	6.5/5.0	2.2/2.1	150.25	97.5
AM 180L ZG	6/8	11/8.5	15/11.5	985/730	106.6/111.2	86/83	0.76/0.74	24/20	26/22	6.8/5.5	2.0/2.1	215.0	150.0
AM 200L PG	6/8	15/11.5	20/15.6	980/735	146.2/149.4	88/86.5	0.82/0.74	30.5/25.5	32/27	5.8/4.8	1.8/2.3	285.0	220.0
AM 200L RG	6/8	19/14.5	26/19.7	980/735	185.1/188.4	89/86.5	0.83/0.75	37/32	39/34	6.0/5.5	1.9/2.3	375.0	255.0
AM 225S PG	6/8	23/18	31/24	985/735	223/233.9	89/88	0.83/0.78	45/38	47/40	6.2/5.2	1.9/2.0	583.0	310.0
AM 225M PG	6/8	28/21 ¹⁾	38/28 ¹⁾	985/735	271.5/272.8	90/88.5	0.82/0.78	54/45	57/47	5.8/5.0	1.9/1.9	583.0	315.0
AM 250M PG	6/8	31/24	42/32.5	985/735	300.5/311.8	91/91	0.84/0.79	59/49	62/51	8.4/7.5	2.6/3.4	1320.0	490.0
AM 280S G	6/8	44/33 ¹⁾	59.5/45 ¹⁾	988/738	425.3/427	91/90	0.81/0.75	87/70	91/74	5.2/5.0	1.4/1.7	1200.0	580.0
AM 280M G	6/8	55/42 ¹⁾	75/57 ¹⁾	988/738	531.6/543.5	91/90	0.81/0.75	108/90	113/95	5.2/5.0	1.5/2.1	1400.0	620.0
AM 315S G	6/8	65/48	87/64	988/740	628.3/619.4	92.0/92.0	0.87/0.81	117/90	121/94	7.5/7.4	2.0/2.2	3100.0	790.0
AM 315M G	6/8	75/55	100/74	988/740	724.9/709.8	92.5/92.0	0.87/0.81	135/105	140/109	7.5/7.4	2.1/2.3	3600.0	860.0
AM 315L G	6/8	90/70	120/94	988/740	869.9/903.3	93.0/92.5	0.87/0.81	160/135	166/140	7.5/7.5	2.2	4300.0	990.0

1) Temperature rise to class F

Three-phase pole-changing motors for fan drives designed for range of rated voltage 380-420 V ± 5% - 50 Hz

For mains voltage to IEC 60038 400 V ± 10% - 50 Hz

Temperature rise to class B

Type	kW	HP	min ⁻¹	M _N Nm	η 100%	cos φ	I _N		I _A /I _N	M _A /M _N	J		
							400V	380-420V			10 ³ kgm ²	kg	
1500/3000 min⁻¹ (4/2 poles) - Dahlander connection Y/YY													
AMV 63Z AA	4/2	0.07/0.33	0.095/0.45	1350/2700	0.5/1.2	55/60	0.70/0.80	0.25/0.95	0.27/1.1	2.5/2.6	1.8/1.6	0.37	5.0
AMV 71Z AA	4/2	0.08/0.37	0.11/0.5	1350/2870	0.6/1.2	60/64	0.65/0.68	0.30/1.3	0.35/1.4	3.2/4.3	2.0/2.8	0.82	7.9
AMV 71Z BA	4/2	0.12/0.55	0.16/0.75	1430/2835	0.8/1.9	70/68	0.65/0.72	0.40/1.6	0.42/1.7	4.1/4.0	3/2.8	1.08	10.0
AMV 80Z AA	4/2	0.15/0.75	0.2/1.0	1400/2710	1/2.6	70/68	0.68/0.80	0.45/1.9	0.45/2.0	2.6/4.6	2.8/2.9	1.58	8.3
AMV 80Z BA	4/2	0.22/1.1	0.3/1.5	1420/2820	1.5/3.7	70/73	0.75/0.84	0.6/2.5	0.65/2.6	4.6/4.7	2.7/2.9	2.0	11.5
AMV 90L AA	4/2	0.30/1.5	0.4/2.0	1400/2830	2/5.1	69/70	0.70/0.84	0.9/3.5	1.0/3.7	4.7/5.0	2.7/3.0	3.13	15.6
AMV 90L BA	4/2	0.44/2.2	0.6/3.0	1430/2830	2.9/7.4	74/72	0.76/0.89	1.1/4.8	1.2/5.0	4.5/5.2	2.6/2.8	3.73	17.1
AMV 100L AA	4/2	0.50/2.5	0.67/3.3	1430/2840	3.3/8.4	72/73	0.77/0.88	1.3/5.3	1.4/5.6	4.6/5.0	2.2/2.3	4.6	21.4
AMV 100L BA	4/2	0.60/3.0	0.8/4.0	1440/2850	4/10.1	78/77	0.79/0.87	1.3/6.2	1.4/6.5	4.5/4.5	2.2/2.1	5.58	23.2
AMV 112M AA	4/2	0.75/3.70	1.0/5.0	1440/2850	5/12.4	74/72	0.80/0.90	1.7/7.9	1.9/2.2	4.5/5.1	2.0/2.4	13.3	36.1
AMV 112M BA	4/2	0.9/4.5	1.2/6.1	1440/2850	6/15.1	75/73	0.82/0.90	2.0/9.5	2.1/9.8	4.5/5.5	2.0/2.3	14.75	40.0
AMV 132S AA	4/2	1.1/5.5	1.5/7.5	1440/2880	7.3/18.2	81.5/84.8	0.78/0.90	2.5/10.4	2.6/11.0	5.0/6.0	2.1/2.8	13.83	42.6
AMV 132S BA	4/2	1.5/7 ¹⁾	2/9.5 ¹⁾	1440/2900	9.9/23.1	82.0/86.0	0.78/0.92	3.4/12.8	3.8/13.0	5.3/6.5	2.2/2.9	13.83	42.6
AMV 132M CA	4/2	1.9/8.0	2.6/10.9	1450/2930	12.5/26.1	83.7/88.0	0.82/0.87	4.0/15.1	4.0/16.0	5.5/7.0	2.2/3.0	17.13	51.4
AMV 160M AA	4/2	2.8/11	3.8/15.0	1440/2940	18.6/35.7	82.5/88.2	0.78/0.90	6.3/20.0	7.0/20.4	5.0/7.5	2.0/2.1	51.75	94
AMV 160M BA	4/2	3.3/13.5 ¹⁾	4.5/18.3 ¹⁾	1440/2920	21.9/44.2	83.0/88.5	0.80/0.92	7.2/24.0	7.5/24.0	5.5/7.5	2.0/2.2	51.75	94
AMV 160L CA	4/2	4.4/18.5 ¹⁾	6.0/25.1 ¹⁾	1450/2940	29/60.1	85.5/89.5	0.83/0.92	9.0/32.5	9.5/33.0	5.5/7.5	2.0/2.2	64.0	108.7
AMV 180M ZG	4/2	5/20	6.7/27	1470/2950	32.5/64.7	89/88	0.83/0.89	10/37.5	10.5/38.5	5.5/7.5	2.0/2.1	112.0	130.0
AMV 180L ZG	4/2	6/24	8/32	1470/2940	39/78	90/89	0.83/0.88	11.5/45	13/47	5.5/7.5	2.0/2.1	132.0	140.0
AMV 200L PG	4/2	6.5/30	8/40	1480/2950	41.9/97.1	91.5/90	0.81/0.89	12.2/53	12.6/55	7.1/7.7	2.6/2.3	206.0	230.0
AMV 200L RG	4/2	7/35	9.5/47	1480/2950	45.2/113.3	91.5/90	0.82/0.89	14/62	14.8/64	7.1/7.7	2.6/2.3	248.0	255.0
AMV 225M PG	4/2	8.0/40	10.7/54	1485/2970	51.4/128.6	92/91	0.81/0.89	15.5/70	16.1/73	7.5/8.5	2.3/2.1	428.0	330.0
AMV 250M PG	4/2	11.0/55	14.7/75	1485/2965	70.7/177.1	93/92.5	0.82/0.92	21/92	22/96	7.4/8.4	3.6/3.4	750.0	465.0
AMV 280S G	4/2	13/67	17/90	1485/2980	83.6/214.7	93.5/93	0.83/0.88	24.5/118	26/122	8.4/8.9	2.9/2.5	1200.0	580.0
AMV 280M G	4/2	16/80	21/107	1485/2980	102.9/256.4	93.5/93	0.83/0.88	29.5/140	32/144	8.4/8.9	2.9/2.5	1400.0	620.0
AMV 315S G	4/2	20/100	27/134	1492/2975	128/321	93.5/93	0.84/0.90	37/174	39/180	7.4/8.3	1.9/1.6	2200.0	860.0
AMV 315M G	4/2	23/120	31/160	1492/2975	147.2/385.2	94.5/94	0.84/0.90	42/207	45/213	7.8/8.6	2.0/1.8	2500.0	940.0
AMV 315L G	4/2	28/145	38/195	1492/2975	179.2/465.4	94.5/94	0.84/0.90	51/250	54/257	8.0/8.7	2.0/1.8	3100.0	1120.0

1) Temperature rise to class F

Three-phase pole-changing motors for fan drives designed for range of rated voltage 380-420 V ± 5% - 50 Hz

For mains voltage to IEC 60038 400 V ± 10% - 50 Hz



Temperature rise to class B

Type	kW	HP	min ⁻¹	M _N Nm	η 100%	cos φ	I _N		I _R /I _N	M _R /M _N	J		
							400V	380-420V			10 ³ kgm ²	kg	
750/1500 min⁻¹ (8/4 poles) - Dahlander connection Y/YY													
AMV 71Z AA	8/4	0.08/0.37	0.11/0.5	660/1370	1.2/2.6	26/57	0.63/0.72	0.60/1.25	0.65/1.35	2.8/3.4	1.9/1.7	1.24	6.8
AMV 80Z AA	8/4	0.12/0.55	0.16/0.75	685/1420	1.7/3.7	50/69	0.60/0.74	0.58/1.53	0.65/1.6	1.9/3.3	1.4/1.5	2.47	9.2
AMV 80Z BA	8/4	0.18/0.75	0.25/1.0	660/1380	2.6/5.2	53/67	0.73/0.81	0.65/1.9	0.7/2.0	2.0/3.5	1.6/1.7	2.41	10.6
AMV 90L AA	8/4	0.18/1.1	0.25/1.5	680/1400	2.5/7.5	60/70	0.65/0.82	0.9/2.7	1.0/2.8	2.8/4.0	1.5/2.0	2.98	15.7
AMV 90L CA	8/4	0.4/1.6	0.54/2.15	675/1400	5.7/10.9	61.5/75	0.64/0.79	1.8/4.0	1.8/4.1	3.1/5.0	1.6/2.2	3.70	19.6
AMV 100L AA	8/4	0.45/2.2	0.60/3.0	680/1420	6.3/14.8	63.1/75.3	0.60/0.80	1.7/5.0	1.9/5.3	2.7/4.7	1.7/2.0	5.58	21.9
AMV 100L BA	8/4	0.6/2.6	0.80/3.5	680/1435	8.4/17.3	64.0/76.2	0.63/0.75	2.2/6.5	2.3/6.7	2.7/4.8	1.7/2.2	6.00	23.7
AMV 112M AA	8/4	0.7/3.3	0.94/4.5	690/1420	9.7/22.2	62/78	0.70/0.80	2.2/7.4	2.3/7.6	3.4/6.5	1.8/2.4	16.70	34.2
AMV 112M CA	8/4	1.0/4.0	1.34/5.5	720/1420	13.3/26.9	60/77	0.70/0.82	3.1/8.6	3.3/9.0	3.5/5.0	2.3/1.9	19.50	40.0
AMV 132S AA	8/4	1.1/4.5	1.5/6.1	725/1450	14.5/29.6	77.0/85.5	0.58/0.82	3.6/9.3	4.0/9.7	3.5/5.4	2.2/2.7	22.4	41.9
AMV 132M BA	8/4	1.4/5.5	1.9/7.5	720/1440	18.6/36.5	78.0/86.0	0.62/0.82	4.2/11.3	4.5/12	3.6/5.5	2.0/2.5	29.25	51.0
AMV 132M CA	8/4	1.8/7.5	2.4/10.2	720/1450	23.9/49.4	78.2/86.5	0.64/0.86	5.2/14.6	5.5/15.0	4.6/6.0	2.0/2.5	37.25	65.0
AMV 160M ZA	8/4	2.2/10.0	3.0/13.0	720/1450	29.2/65.9	80.0/88.0	0.61/0.83	6.6/19.9	6.8/20.4	3.5/6.0	1.8/1.7	81.25	88.5
AMV 160L ZA	8/4	3.2/15.0 ¹⁾	4.3/20.0 ¹⁾	720/1450	42.4/98.8	81.0/90.0	0.61/0.88	9.4/27.3	9.8/28	3.5/6.5	1.7/1.8	105.75	106.5
AMV 180M ZG	8/4	4/17	5.5/23	730/1465	52.3/110.8	84/90	0.61/0.83	11.5/33	13/34.5	4.0/7.2	1.7/2.3	112.0	130.0
AMV 180L ZG	8/4	5/20	6.8/27	730/1470	65.4/129.9	84/90	0.61/0.83	14.5/39	15/41	4.2/7.6	1.7/2.3	132.0	140.0
AMV 200L PG	8/4	6/24	8/32.5	735/1480	78/154.9	87.5/90.5	0.62/0.82	15.5/50	16.5/52	3.6/7.6	1.6/2.4	206.0	230.0
AMV 200L RG	8/4	7/28	9.5/38	735/1480	90.9/180.7	88/91	0.60/0.85	19/55	20/58	3.5/7.7	1.7/2.6	248.0	255.0
AMV 225M PG	8/4	8.5/36	11.5/49	735/1480	110.4/232.3	89.5/92	0.62/0.82	22/72	23/75	4.0/8.7	1.8/2.5	430.0	330.0
AMV 250M PG	8/4	11/46	15/62	740/1475	142/297.8	91.5/92	0.79/0.88	22/81	23/85	5.3/8.4	2.4/2.9	1110.0	490.0
AMV 280S G	8/4	16/66	22/88	740/1485	206.5/424.4	90/93	0.62/0.85	42/121	44/127	3.3/7.0	1.5/2.4	1200.0	580.0
AMV 280M G	8/4	19/78	26/106	740/1485	245.2/501.6	91/93	0.62/0.85	49/143	51/150	3.3/7.0	1.5/2.4	1400.0	620.0
AMV 315S G	8/4	26/105	35/140	743/1480	334.2/677.5	92.5/94.0	0.60/0.87	68/185	75/193	4.1/5.5	1.1/1.6	1900.0	800.0
AMV 315M G	8/4	33/132	45/177	743/1480	424.1/851.7	93.0/95.0	0.60/0.87	85/230	92/243	4.3/5.7	1.0/1.5	2500.0	940.0
AMV 315L G	8/4	40/165	55/220	743/1480	514.1/1064.6	93.0/95.5	0.61/0.88	103/285	109/300	4.2/6.0	1.2/1.6	3100.0	1120.0

1) Temperature rise to class F

Three-phase pole-changing motors for fan drives designed for range of rated voltage 380-420 V ± 5% - 50 HZ

For mains voltage to IEC 60038 400 V ± 10% - 50 HZ

Temperature rise to class B

Type	kW	HP	min ⁻¹	M _N Nm	η 100%	cos φ	I _N		I _A /I _N	M _A /M _N	J		
							400V	380-420V			10 ⁻³ kgm ²	kg	
1500/1000 min⁻¹ (4/6 poles) - separate windings													
AMV 71Z AA	4/6	0.25/0.08	0.33/0.11	1370/900	1.7/0.4	60/40	0.80/0.70	0.75/0.4	0.8/0.45	3.0/2.5	1.6/1.6	1.15	6.7
AMV 71Z BA	4/6	0.37/0.13	0.50/0.18	1360/880	2.6/1.4	62/44	0.80/0.70	1.0/0.6	1.1/0.7	3.2/2.6	1.6/1.6	1.24	7.2
AMV 80Z AA	4/6	0.55/0.18	0.75/0.25	1380/920	3.8/1.9	60/42	0.83/0.82	1.60/0.75	1.7/0.8	3.5/2.4	1.6/1.0	1.97	8.3
AMV 80Z BA	4/6	0.75/0.25	1.0/0.33	1400/940	5.1/2.5	70/60	0.82/0.72	1.8/0.8	1.9/0.9	4.2/2.6	1.6/1.3	4.05	14
AMV 90S AA	4/6	0.75/0.24	1.0/0.32	1400/950	5.1/2.4	70/60	0.82/0.72	1.9/0.8	2.0/0.9	4.2/2.6	1.6/1.3	4.05	14
AMV 90L BA	4/6	1.1/0.37	1.5/0.50	1400/930	7.5/3.8	70/60	0.81/0.74	2.8/1.2	3.0/1.3	4.3/2.7	1.6/1.2	4.78	16.4
AMV 90L CA	4/6	1.5/0.5	2.0/0.67	1420/950	10.1/5	73/64	0.80/0.70	3.52/1.52	3.7/1.6	4.8/2.6	1.5/1.3	5.98	20.5
AMV 100L AA	4/6	1.85/0.60	2.5/0.75	1400/920	12.6/6.2	74/64	0.80/0.73	4.6/1.9	4.8/2.1	4.8/3.1	1.8/1.5	6.73	23.4
AMV 100L BA	4/6	2.2/0.75	3.0/1.0	1420/950	14.8/7.5	76/66	0.79/0.75	5.1/2.1	5.3/2.2	5.0/3.5	1.7/1.3	9.25	22.6
AMV 112M AA	4/6	3/1.0	4.0/1.34	1440/970	19.9/9.8	80/73	0.81/0.65	6.6/3.0	6.8/3.2	5.8/4.6	2.5/2.1	13.3	30.4
AMV 132S AA	4/6	3.8/1.3	5.2/1.8	1460/970	24.9/12.8	85.0/75.0	0.8/0.72	8.1/3.5	8.5/4	6.5/4.0	2.2/1.7	22.4	41.9
AMV 132M BA	4/6	4.4/1.5	6.0/2.0	1460/970	28.8/14.8	86.0/78.2	0.85/0.73	8.7/3.8	9.2/4.3	6.5/4.4	2.2/1.7	29.25	51.0
AMV 132M CA	4/6	5.5/1.8	7.5/2.4	1460/970	36/17.7	86.8/80.0	0.84/0.74	10.9/4.4	12.0/4.	7.0/4.7	2.6/1.8	37.25	65.0
AMV 132M DA	4/6	6.3/2.2 ¹⁾	8.6/3.0 ¹⁾	1460/970	41.2/21.7	86.8/81.0	0.84/0.73	12.5/5.4	13.5/5.	7.2/4.8	2.6/1.9	37.25	66.0
AMV 160M AA	4/6	7.5/2.5	10.0/3.4	1470/975	48.7/24.5	87.5/83.0	0.83/0.75	14.9/5.8	15.6/6.0	8.3/4.5	2.5/1.9	81.25	88.5
AMV 160L BA	4/6	11.0/3.7	15.0/5.0	1470/970	71.5/36.4	88.0/84.2	0.81/0.73	22.5/8.7	23.4/9.0	8.0/4.8	2.4/1.8	105.75	106.5
AMV 160L CA	4/6	13.0/4.0 ¹⁾	17.7/5.4 ¹⁾	1460/970	85/39.4	88.0/84.5	0.81/0.72	26.3/9.5	27.5/10	8.0/4.8	2.4/1.9	105.75	106.5
AMV 180L ZG	4/6	17/5.5	23/7.5	1470/975	110.4/53.9	89.5/86	0.86/0.84	31/11	33/11.5	7.6/5.5	1.9/1.5	215.0	150.0
AMV 200L PG	4/6	21/7	28/9.5	1470/985	136.4/67.9	88/87	0.88/0.84	39/14	41/14.5	6.0/6.2	1.8/2.2	285.0	220.0
AMV 200L RG	4/6	26/9	35/12	1475/985	168.3/87.3	89.5/88	0.88/0.85	48/17	50/18	7.0/6.2	2.0/2.1	375.0	255.0
AMV 225M PG	4/6	33/11	45/15	1475/985	213.7/106.6	90/89	0.89/0.85	60/21	63/22	7.0/6.8	2.0/2.4	583.0	315.0
AMV 250M PG	4/6	50/18	68/24	1470/985	324.8/174.5	91/90	0.90/0.85	89/34.5	93/36	8.5/8.5	2.8/3.2	1110.0	490.0
AMV 280S G	4/6	63/22	84/29	1490/992	403.8/211.8	92.5/91	0.88/0.85	111/42	117/44	7.7/8.3	1.9/2.5	1200.0	580.0
AMV 280M G	4/6	73/27	98/36	1490/992	467.9/259.9	92.5/91	0.87/0.85	131/50	137/53	7.7/8.3	1.9/2.5	1400.0	620.0
AMV 315S G	4/6	90/31	121/42	1492/995	576/297.5	93/90.5	0.88/0.88	160/58	167/62	8.3/8.0	2.2/2.5	3100.0	790.0
AMV 315M G	4/6	115/36	154/48	1492/995	736.1/345.5	93/90.5	0.88/0.87	200/67	209/71	8.3/8.0	2.2/2.5	3600.0	860.0
AMV 315L G	4/6	135/43	180/58	1490/993	865.2/413.5	93.5/90	0.88/0.87	235/79	245/83	8.0/7.8	2.3/2.6	4300.0	990.0

1) Temperature rise to class F

Three-phase pole-changing motors for fan drives designed for range of rated voltage 380-420 V ± 5% - 50 HZ

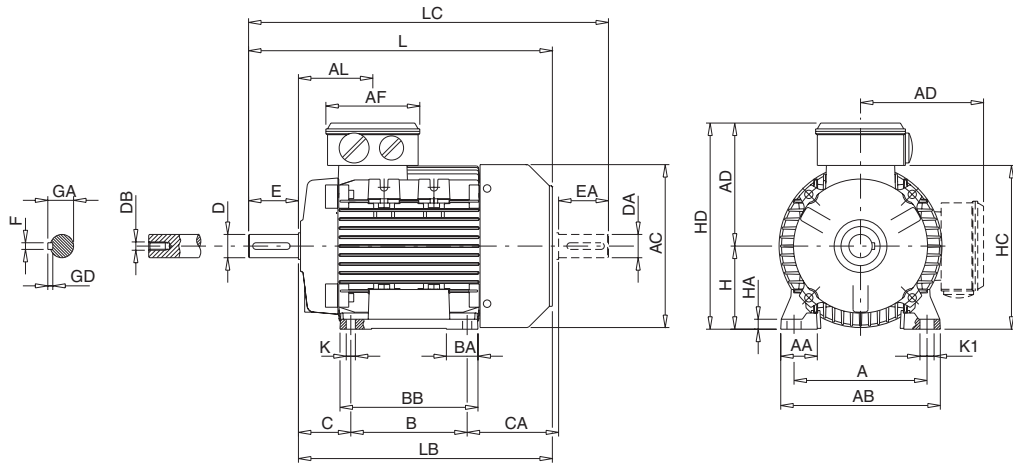
For mains voltage to IEC 60038 400 V ± 10% - 50 Hz



Temperature rise to class B

Type	kW	HP	min ⁻¹	M _N Nm	η 100%	cos φ	I _N		I _R /I _N	M _R /M _N	J		
							400V	380-420V			10 ³ kgm ²	kg	
1000/750 min⁻¹ (6/8 poles) - separate windings													
AMV 80Z AA	6/8	0.25/0.11	0.33/0.15	930/720	2.6/1.5	53/49	0.79/0.62	0.9/0.55	1.0/0.7	2.9/3.0	1.6/1.8	1.97	7.9
AMV 80Z BA	6/8	0.37/0.15	0.50/0.25	920/715	3.8/2	52/47	0.81/0.63	1.3/0.8	1.4/0.9	2.8/2.8	1.4/1.9	2.47	9.5
AMV 90L AA	6/8	0.55/0.22	0.75/0.30	960/740	5.5/2.8	65/47	0.62/0.51	2.0/1.4	2.1/1.5	3.9/2.9	2.5/2.1	4.78	16.2
AMV 90L BA	6/8	0.75/0.30	1.0/0.40	940/720	7.6/4	64/45.5	0.67/0.52	2.5/1.85	2.7/1.9	3.4/2.6	2.2/1.9	4.78	16.2
AMV 100L AA	6/8	1.1/0.45	1.5/0.60	950/710	11.1/6.1	70.6/58	0.71/0.67	3.1/1.7	3.3/1.8	4.3/2.8	2.0/1.3	9.43	22.0
AMV 112M AA	6/8	1.5/0.6	2.0/0.80	970/720	14.8/8	75.8/65	0.65/0.60	4.4/2.3	3.7/2.5	5.5/3.4	2.8/2.1	18.70	39.0
AMV 132S ZA	6/8	2.2/0.9	3.0/1.2	970/715	21.7/12	78.0/69.0	0.67/0.55	6.1/3.5	6.7/4.0	4.8/4.0	1.6/1.6	29.5	42.5
AMV 132M YA	6/8	3/1.2	4.0/1.6	960/715	29.8/16	80/72	0.7/0.55	7.8/4.4	8.2/4.8	4.8/4.1	1.6/1.6	37.75	55.5
AMV 132M ZA	6/8	4/1.6	5.5/2.2	960/715	39.8/21.4	81.0/74.0	0.78/0.6	9.2/5.2	9.8/5.6	5.3/4.4	1.7/1.7	44.5	64.1
AMV 160M YA	6/8	5.5/2.2	7.5/3.0	970/730	54.1/28.8	83/76	0.77/0.6	12.5/7	13.5/7.5	5.7/5.6	1.6/1.9	112.7	88.0
AMV 160M ZA	6/8	7/3	9.5/4.1	970/730	68.9/39.2	84/77	0.80/0.65	15/8.7	16/9.3	6.0/5.8	1.7/2.2	150.25	97.5
AMV 180L ZG	6/8	12/6	16/8	985/735	116.3/78	87/84	0.76/0.72	26/14.5	27.5/15	7.2/6.0	2.1/2.1	215.0	150.0
AMV 200L PG	6/8	17/8.5	23/11.5	980/735	165.7/110.4	89/85	0.80/0.74	35/19.5	36.5/20.5	5.6/5.6	1.9/2.3	285.0	220.0
AMV 200L RG	6/8	22/11	30/15	980/735	214.4/142.9	89.5/86	0.81/0.75	43/24.5	46/26	6.3/5.7	2.3/2.5	375.0	255.0
AMV 225M PG	6/8	26/13	35/17.5	985/740	252.1/167.8	90.5/87	0.80/0.74	52/28.5	55/30	6.6/6.2	2.2/2.3	583.0	315.0
AMV 250M PG	6/8	38/19	52/26	985/735	368.4/246.9	92/90	0.87/0.81	69/38	72/40	8.0/7.5	2.7/3.2	1110.0	490.0
AMV 280S G	6/8	43/22	58/29	990/475	414.8/442.3	92/90	0.80/0.77	84/46	88/48	5.8/6.0	1.5/2.2	1200.0	480.0
AMV 280M G	6/8	54/27	72/36	990/745	520.9/346.1	92/90	0.80/0.77	104/57	110/60	5.8/6.1	1.5/2.2	1400.0	620.0
AMV 315S G	6/8	73/35	98/47	988/745	705.6/448.6	92.5/91	0.87/0.81	130/68	137/71	7.3/7.3	2.0/2.2	3100.0	790.0
AMV 315M G	6/8	85/40	114/54	988/745	821.6/512.7	93/92	0.87/0.81	150/77	158/81	7.5/7.4	2.1/2.3	3600.0	860.0
AMV 315L G	6/8	105/50	140/167	988/745	1014.9/640.9	93.5/92	0.87/0.82	185/95	193/100	7.5/7.5	2.4/2.2	4300.0	990.0

THREE-PHASE FRAME SIZE 56 - 160 IM B3 ALUMINIUM ALLOY FRAME



IEC DIN	H h	A b	B a	C w ₁	K ¹⁾ s	AB f	BB e	CA	AD ²⁾ g ₄	HD ²⁾	AC m ₁	HC g	HA
56	56	90	71	36	6	109	90	65	98	154	112	110	8
63	63	100	80	40	7	126	105	72	103	166	125	125	8
71	71	112	90	45	7	144	109	83	112	183	142	142	9
80	80	125	100	50	10	153	125	89	129	209	160	162	9.5
90S	90	140	100	56	10	170	150	116	138	228	180	181	11
90L	90	140	125	56	10	170	150	91	138	228	180	181	11
100L	100	160	140	63	11	192	166	110	145	245	196	198	12
112M	112	190	140	70	12.5	220	175	126	161	273	225	226	15
132S	132	216	140	89	12	256	180	134	195	327	248	261	17
132M	132	216	178	89	12	256	218	136	195	327	248	261	17
132M ⁴⁾	132	216	178	89	12	256	218	166	195	327	248	261	17
160M	160	254	210	108	14	320	270	180	238	398	317	316	23
160L	160	254	254	108	14	320	310	180	238	398	317	316	23
160L ⁵⁾	160	254	254	108	14	320	310	210	238	398	317	316	23

IEC DIN	K1 c	L k	LB	LC k ₁	AL	AF	BA m	AA n	D/DA d/d ₁	E/EA l/l ₁	F/FA u/u ₁	GD	GA/GC t/t ₁	DB ³⁾ d ₆ /d ₇
56	12	190	170	211	62	93	22	22	9	20	3	3	10.2	M3
63	12	213	190	238	63	93	26	26	11	23	4	4	12.5	M4
71	17	245	215	278	69	93	22	30	14	30	5	5	16	M5
80	14	272	232	319	79	116	28.5	34.5	19	40	6	6	21.5	M6
90S	15	317	267	372	85	116	28/53	37	24	50	8	7	27	M8
90L	15	317	267	372	85	116	28/53	37	24	50	8	7	27	M8
100L	17	366	306	433	91	116	38	44	28	60	8	7	31	M10
112M	19	388	328	456	91.5	116	46	48	28	60	8	7	31	M10
132S	20	442	362	523	100	133	45	59	38	80	10	8	41	M12
132M	20	482	402	563	120	133	45	59	38	80	10	8	41	M12
132M ⁴⁾	20	500	420	593	120	133	45	59	38	80	10	8	41	M12
160M	18	608	498	718	146	150	65	76	42	110	12	8	45	M16
160L	18	652	542	762	168	150	65	76	42	110	12	8	45	M16
160L ⁵⁾	18	678	568	778	168	150	65	76	42	110	12	8	45	M16

- 1) Clearance hole for screw
- 2) Maximum dimension
- 3) Centering holes in shaft extensions to DIN 332 part 2
- 4) Only for MT A2*
- 5) Only for LR A4

THREE-PHASE FRAME SIZE 180 - 315 IM B3 CAST IRON FRAME



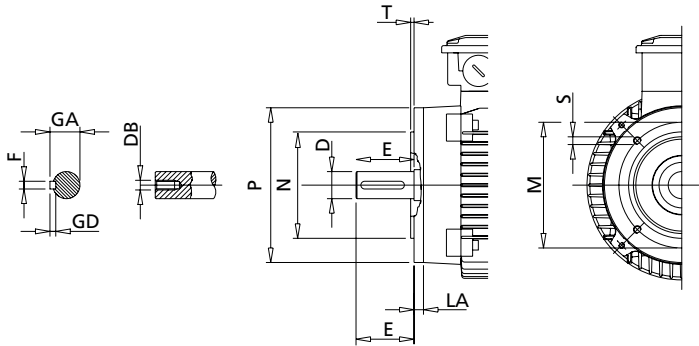
	IEC DIN	H h	A b	B a	C w ₁	K ¹⁾ s	AB f	BB e	CA	AD ²⁾ g _c	HD ²⁾	AC	HC m ₁	HA g	K1 c
180M		180	279	241	121	14.5	330	316	256	263	443	355	360	15	18
180L		180	279	279	121	14.5	330	316	218	263	443	355	360	15	18
200L		200	318	305	133	18.5	380	360	237	330	530	379	398	18	18
225S	2 - 4/2	225	356	286	149	18.5	420	375	318	357	582	443	447	22	18.5
	≥4	225	356	286	149	18.5	420	375	318	357	582	443	447	22	18.5
225M	2 - 4/2	225	356	311	149	18.5	420	375	318	357	582	443	447	22	18.5
	≥4	225	356	311	149	18.5	420	375	318	357	582	443	447	22	18.5
250M	2 - 4/2	250	406	349	168	24	500	425	321	385	635	494	500	45	28
	≥4	250	406	349	168	24	500	425	321	385	635	494	500	45	28
280S	2 - 4/2	280	457	368	190	24	560	450	357	419	699	494	564	50	28
	≥4	280	457	368	190	24	560	450	357	419	699	494	564	50	28
280M	2 - 4/2	280	457	419	190	24	560	500	357	419	699	494	564	50	28
	≥4	280	457	419	190	24	560	500	357	419	699	494	564	50	28
315S YE	2 - 4/2	315	508	406	216	28	630	533	438	510	874	640	666	37	28
	≥4	315	508	406	216	28	630	533	438	510	874	640	666	37	28
315S ZE	2 - 4/2	315	508	406	216	28	630	533	438	510	874	640	666	37	28
	≥4	315	508	406	216	28	630	533	438	510	874	640	666	37	28
315M	2 - 4/2	315	508	457	216	28	630	533	387	510	874	640	666	37	28
	≥4	315	508	457	216	28	630	533	387	510	874	640	666	37	28
315L	2 - 4/2	315	508	508	216	28	630	583	386	510	874	640	666	37	28
	≥4	315	508	508	216	28	630	583	386	510	874	640	666	37	28

	IEC DIN	L k	LB	LC k ₁	AL	AF	BA m	AA n	D/DA d/d ₁	E/EA l/l ₁	F/FA u/u ₁	GD	GA/GC t/t ₁	DB ³⁾ d ₂ /d ₂
180M		712	602	838	260.5	180	91	66	48	110	14	9	51.5	M16
180L		712	602	838	260.5	180	91	66	48	110	14	9	51.5	M16
200L		779	669	895	285.5	265	90	79	55	110	16	10	59	M20
225S	2 - 4/2	857.5	747.5	973	304.5	265	95	90	55	110	16	10	59	M20
	≥4	887.5	747.5	1033	304.5	265	95	90	60	140	18	11	64	M20
225M	2 - 4/2	857.5	747.5	973	304.5	265	95	90	55	110	16	10	59	M20
	≥4	887.5	747.5	1033	304.5	265	95	90	60	140	18	11	64	M20
250M	2 - 4/2	970	830	1118	342.5	265	120	135	60	140	18	11	64	M20
	≥4	970	830	1118	342.5	265	120	135	65	140	18	11	69	M20
280S	2 - 4/2	1036	896	1195	374	265	135	122	65	140	18	11	69	M20
	≥4	1036	896	1195	374	265	135	122	75	140	20	12	79.5	M20
280M	2 - 4/2	1087	947	1246	258	265	135	122	65	140	18	11	69	M20
	≥4	1087	947	1246	258	265	135	122	75	140	20	12	79.5	M20
315S YE	2 - 4/2	1190	1050	1340	439	300	123	110	65	140	18	11	69	M20
	≥4	1220	1050	1400	439	300	123	110	80	170	22	14	85	M20
315S ZE	2 - 4/2	1190	1050	1340	439	300	123	110	65	140	18	11	69	M20
	≥4	1220	1050	1400	439	300	123	110	80	170	22	14	85	M20
315M	2 - 4/2	1190	1050	1340	439	300	123	110	65	140	18	11	69	M20
	≥4	1220	1050	1400	439	300	123	110	80	170	22	14	85	M20
315L	2 - 4/2	1240	1100	1390	464	300	123	110	65	140	18	11	69	M20
	≥4	1270	1100	1450	464	300	123	110	80	170	22	14	85	M20

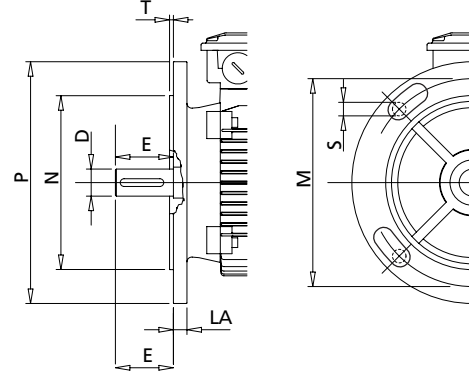
- 1) Clearance hole for screw
- 2) Maximum dimension
- 3) Centering holes in shaft extensions to DIN 332 part 2

THREE-PHASE FRAME SIZE 56 - 160 IM B14, IM B5 ALUMINIUM ALLOY FRAME

IM B14

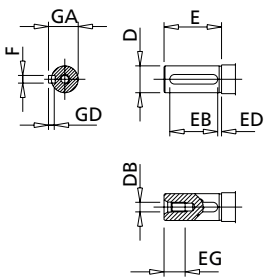


IM B5



IEC DIN	Small flange B14						Large flange B14						Flange B5					
	P a ₁	N b ₁	LA c ₁	M e ₁	T f ₁	S s ₁	P a ₁	N b ₁	LA c ₁	M e ₁	T f ₁	S s ₁	M e ₁	N b ₁	P a ₁	T f ₁	LA c ₁	S ¹⁾ s ₁
56	80	50		65	3	M5	105	70	8	85	2.5	M6	100	80	120	2.5	5.5	M6
63	90	60	9	75	2.5	M5	120	80	8	100	2.5	M6	115	95	140	3	9	M8
71	105	70	11	85	2.5	M6	140	95	8	115	2.5	M8	130	110	160	3.5	10	M8
80	120	80	8	100	3	M6	160	110	8.5	130	3.5	M8	165	130	200	3.5	10	M10
90S-L	140	95	10	115	3	M8	160	110	9	130	3.5	M8	165	130	200	3.5	12	M10
100L	160	110	10	130	3.5	M8	200	130	12	165	3.5	M10	215	180	250	4	14	M12
112M	160	110	10	130	3.5	M8	200	130	12	165	3.5	M10	215	180	250	4	14	M12
132S-M	200	130	30	165	3.5	M10	250	180	12	215	4	M12	265	230	300	4	14	M12
160M-L	250	180	12	215	4	M12	300	230	12	265	5	M16	300	250	350	5	15	M16

1) Clearence hole for screw. Hole as standard for 132 to 160 frame size



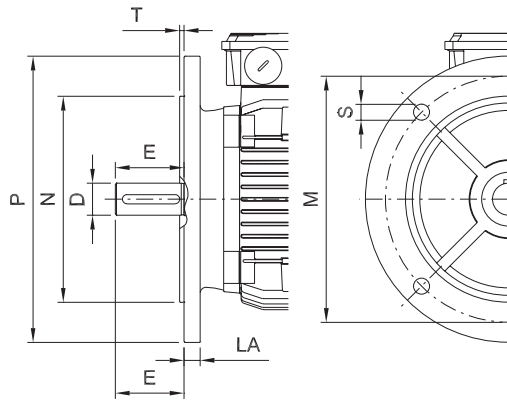
IEC DIN	D d	E l	F h9 u	GD	GA t	DB ¹⁾ d ₆	EG	EB	ED
56	9 j6	20	3	3	10.2	M3	10	15	2.5
63	11 j6	23	4	4	12.5	M4	10	15	4
71	14 j6	30	5	5	16	M5	12.5	20	4
80	19 j6	40	6	6	21.5	M6	16	30	4
90S-L	24 j6	50	8	7	27	M8	19	40	4
100L	28 j6	60	8	7	31	M10	22	50	4
112M	28 j6	60	8	7	31	M10	22	50	4
132S-M	38 k6	80	10	8	41	M12	28	70	4
160M-L	42 k6	110	12	8	45	M16	36	100	4

1) Centering holes in shaft extension to DIN 332 part 2

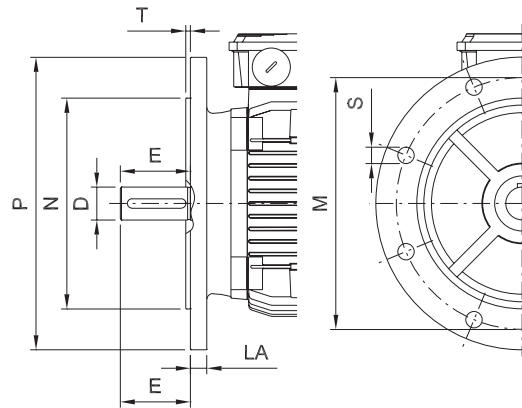
THREE-PHASE FRAME SIZE 180 - 315 IM B5 CAST IRON FRAME



IM B5 - 180/200



IM B5 - 225/315



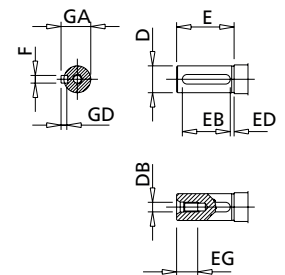
IEC DIN	M e ₁	N b ₁	P a ₁	T f ₁	LA c ₁	S ¹⁾ s ₁
180M/L	300	250	350	5	13	M16
200L	350	300	400	5	15	M16

1) Clearance hole for screw

IEC DIN	M e ₁	N b ₁	P a ₁	T f ₁	LA c ₁	S ¹⁾ s ₁
225S/M	400	350	450	5	16	M16
250M	500	450	550	5	18	M16
280S/M	500	450	550	5	18	M16
315S/M/L	600	550	660	6	22	M20

1) Clearance hole for screw

IEC DIN	Poli	D d	E l	F h9 u	GD	GA t	DB ²⁾ d ₆	EG	EB	ED
180M/L		48 k6	110	14	9	51.5	M16	36	100	5
200L		55 m6	110	16	10	59	M20	42	100	5
225S	2 - 4/2	55 m6	110	16	10	59	M20	42	100	5
	≥4	60 m6	140	18	11	64	M20	42	110	20
225M	2 - 4/2	55 m6	110	16	10	59	M20	42	100	5
	≥4	60 m6	140	18	11	64	M20	42	110	20
250M	2 - 4/2	60 m6	140	18	11	64	M20	42	110	20
	≥4	65 m6	140	18	11	69	M20	42	110	20
280S	2 - 4/2	65 m6	140	18	11	69	M20	42	125	7.5
	≥4	75 m6	140	20	12	79.5	M20	42	125	7.5
280M	2 - 4/2	65 m6	140	18	11	69	M20	42	125	7.5
	≥4	75 m6	140	20	12	79.5	M20	42	125	7.5
315S/M/L	2 - 4/2	65 m6	140	18	11	69	M20	42	125	10
	≥4	80 m6	170	22	14	85	M20	50	140	25



2) Centering holes in shaft extension to DIN 332 part 2